

Project Size

2,688 sq ft

Construction

Type Vb

Contract Type

Negotiated

Facility Use

Pre-owned car sales center

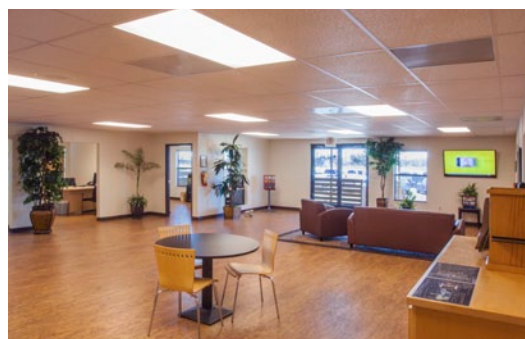
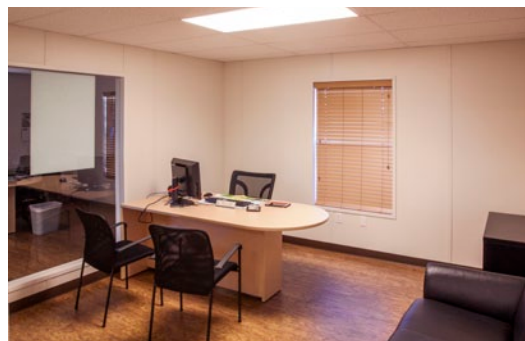
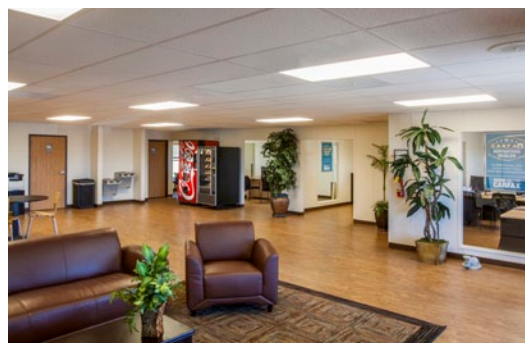
Description

Permanent modular building with Hardie-Panel siding and stucco finish

Completion

60 days

Permanent Modular Construction



This 2,688 square foot four-unit complex was built as a pre-owned sales center that is connected with the Automobile Division's Georgetown, Texas-based Ford dealership. Built using Ramtech's traditional permanent modular construction approach, the facility features eight sales offices with 4'0 x 6'0 windows for easy viewing between rooms, a large customer waiting area, and an employee break room. The interior is finished with vinyl covered gypsum on the walls and Allure resilient laminate wood planks for the flooring. The exterior features a parapet wall design with a stucco finish on HardiePanel vertical siding. The step and ramp assembly utilizes the environmentally friendly Trex Decking and Railing system made from reclaimed plastic and wood. Heating and cooling of the facility is accommodated with two three-ton wall-mounted package units, zoned for maximum energy efficiency.