



**INNOVATORS IN MODULAR SOLUTIONS
FOR GOVERNMENT AGENCIES**

ABOUT RAMTECH

As a modular construction specialist since 1982, Ramtech has provided modular building solutions for educational institutions, healthcare providers, Fortune 500 companies, and government agencies throughout the United States. From portable classrooms to modular clinics, modular office buildings to permanent multi-story facilities, no other modular construction company in the Southwest can match our successful track record of building a more diverse range of modular building facilities. As a vertically integrated company, we can offer a comprehensive range of services that includes:

- No-cost project planning
- Full in-house design
- In-plant manufacturing on 20-acre campus
- Complete construction services including site development
- Concurrent multi-site capabilities
- Strong aggregate bonding lines



By providing all these services in a single-source solution, you receive the benefits of accelerated completion time, assurance of value, and a strong professional relationship. Our experience has shown us that the best features we can build into any building are customer satisfaction and value. We believe that the right way is the only way to do a job, and no matter what it takes, we will spare no effort to get it done. Since our inception, every building we've designed, manufactured, and constructed has been an expression of this philosophy.

PERMANENT MODULAR CONSTRUCTION

For permanent government buildings, our Accelerated Building System is the next generation in building design and construction - and it's available exclusively in the Southwest from Ramtech Building Systems. With the Accelerated Building System, an engineered reinforced concrete slab foundation is constructed on the building site while fabrication of the modular building is taking place in Ramtech's manufacturing plant. When complete, the building sections are shipped to the project location, crane-set onto the concrete slab, and quickly weathered-in and finished-out on site. By using this system, we've perfected a government construction approach that provides for:

- Reduced design and construction costs
- Shorter completion time for faster revenue generation
- Superior quality over other construction methods
- The availability of standard and custom floor plans



Our Accelerated Building System provides for the quality and longevity you should expect in a permanent building combined with the flexibility for an extremely aggressive construction schedule. And, Ramtech has standard or custom floorplan designs to meet virtually any facility space need.

Modular Construction



Overall Time Savings of 25% - 50%

Site-Built Construction



TEMPORARY MODULAR CONSTRUCTION



Ramtech's vertically integrated process begins by conducting a comprehensive needs analysis of your government construction project. Then we develop a floor plan and building approach designed to give you the facility you want, all within your budget. By drawing on years of construction experience, we've honed a modular construction approach to temporary government buildings that yields speed in delivery, the assurance of value, and a strong relationship with our clients. With a modular building from Ramtech, you can have an affordable and flexible solution to your facility space needs today.

At Ramtech, modular buildings have been our core competency since 1982. That's why large agencies and small municipalities have relied on Texas-based Ramtech Building Systems to meet their diverse temporary facility needs. Whether it's for a small administrative office or a large training facility, we are uniquely positioned in the modular construction industry to answer the call with professionals who specialize in every aspect of building design, manufacturing, and construction. Our standard floor plans and custom government buildings are provided with:

- Full in-house engineering and design
- Operating and finance lease options
- An inexpensive option to renovations or permanent construction
- The ability to relocate the building should demographics change

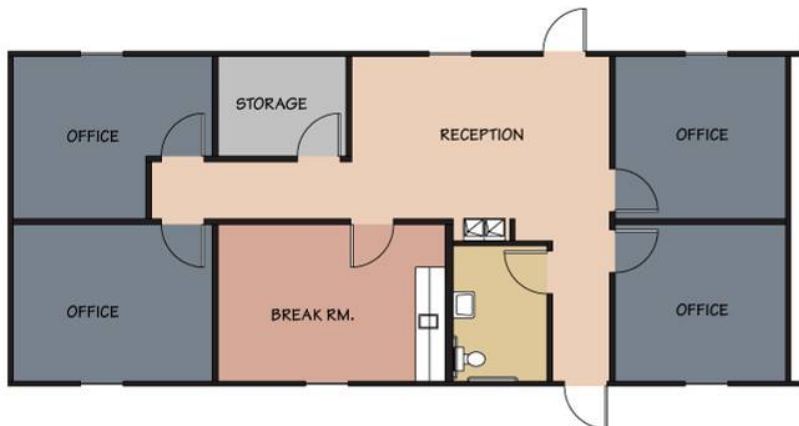


FLOOR PLANS

At Ramtech, we take great pride in helping our clients with their space planning needs, and as part of our service will help develop basic floor plans for you. Among the many standard and custom product designs we provide, the following represent a small sample:

- Portable office building featuring eight private offices (1,925 sf)
- Four doctor medical clinic with business office, waiting room, lab, procedure rooms, consultation rooms, break room, nurse's station, and ten exam rooms (3,840 sf)
- Portable classroom wing with 8 classrooms, storage room, janitor room, and restrooms (7,920 sf)
- Combined Brigade/Battalion HQ Building with SCIF, NOC, BOC, 5 Training Rooms, LEED Silver Certification, Emergency Power & HVAC (99,050 sf)

These can all be viewed on the [floor plans page](#) at our website, and we invite you to contact Jeff Ward at jward@ramtechgroup.com to discuss your requirements.



Temporary office featuring four offices, lobby, restroom, storage, & breakroom (1,316 sf)

Upper Floor



Lower Floor

Two-story permanent office/training facility featuring three training classrooms, 14 private offices, three cubicle office spaces, three conference rooms, two communication rooms, and a SIPRNET room (14,400 sf)



Project Size

99,050 sq ft

Construction

IBC Type V

Contract Type

Design-build
Stipulated sum

Completion

18 months

Facility Use

Combined Brigade/
Battalion Headquarters

Description

Multi-story building

Brick masonry exterior
designed to match
existing base facilities



As part of the Army's Modularity Realignment program, their \$6b expansion at Fort Bliss included this two-story 99,050 square foot Combat Aviation Brigade Headquarters. Designed to meet LEED Silver, Ramtech utilized its Accelerated Building System to meet project requirements. The building is set on a six inch 4,000 psi concrete slab, and features a 100% brick masonry exterior and 40 miles of communication/data wiring. It includes classrooms, private offices, conference rooms, and restrooms with shower facilities





Project Size

8,500 sq ft

Construction

IBC Type II

Contract Type

Design-build
Stipulated Sum

Completion

270 days

Facility Use

Medical Clinic

Description

Steel & concrete
construction

Brick wainscot and
EIFS exterior
finishes



After the original contractor was removed from this medical clinic expansion project for non-performance, Ramtech employed its Accelerated Building System to meet an expedited construction timeline. Located within two miles of the coast, the facility provided challenges to meet the foundation requirement due to a very shallow water table. The building features a computer-controlled environmental management system, an EIFS exterior, multiple exam rooms, and an imaging center with a large x-ray area.





Project Size

14,400 sq ft

Construction

IBC Type V

Contract Type

Design-build
Stipulated sum

Completion

13 months

Facility Use

Office space and
training facility

Description

Multi-story building

Brick and EIFS exterior
with standing seam
metal roof



Ramtech provided full design-build services for the development and construction of this two-story Accelerated Building System product. Meeting Leed Silver Certification requirements, the facility incorporates three training rooms, 14 private offices, and three cubicle office areas. The building also features three conference rooms, two communication rooms, and a SIPRNET room. The building was designed to blend with the existing architecture of the base at Fort Bliss.





Project Size

4,104 sq ft

Construction

IBC Type V

Contract Type

Design-build
Stipulated sum

Completion

90 days

Facility Use

Office space

Description

Hardi-panel exterior
with a stucco-like
exterior finish

ADA compliant metal
step and ramp
assemblies



The city of Arlington, TX needed to reorganize their water department to meet the city's growing demand for services, and they required a quick solution to relocate some of their administrative and engineering personnel from a different location to the district's sprawling main compound. The solution was a six unit, 4,200 square foot modular complex designed for an adjacent equipment yard area. The facility provides for private offices, engineering space, two conference rooms, and a business office with dispatch area.





Project Size

139,442 sq ft

Construction

IBC Type V

Contract Type

Design-build
Stipulated sum

Completion

165 days

Facility Use

Barracks, Laundry, &
Dayroom – 4th Infantry
Division

Description

Wood construction
Stucco Exterior
Metal Architectural roof



The U.S. Army needed to add additional barracks to house 4th Infantry Division troops training at Fort Hood prior to being introduced into combat in Iraq. Ramtech constructed 88 separate 1,568 sq. ft. six-man barracks, each containing three two-man sleeping quarters with full kitchens and two full restrooms. The buildings were designed and constructed in compliance with strict U.S. Army Corp of Engineers standards. Ramtech was able to complete the design, manufacture, and construction of all the buildings in 180 days.





Project Size

69,864 sq ft

Construction

IBC Type II

Contract Type

Design-build
Stipulated sum

Completion

120 days

Facility Use

Temporary detention
facility

Description

Concrete & epoxy
floors

Metal siding exterior

Electric monitored
doors and security
system



When Bernalillo County experienced severe overcrowding in their county correctional system they were placed under a federal court order to expand their jails or begin releasing inmates. Modular construction was the ideal solution to meet the urgent requirement. Built in three phases, Ramtech designed, manufactured, and constructed this 69,864 square foot minimum security temporary detention facility in 120 days. After the county expanded their permanent facilities, the building was converted to an administrative office.





1400 U.S. Hwy 287 South

Mansfield, TX 76063

800-568-9376

jward@ramtechgroup.com