



**INNOVATORS IN MODULAR SOLUTIONS  
FOR YOUR COMMERCIAL NEEDS**

# ABOUT RAMTECH

As a modular construction specialist since 1982, Ramtech has provided modular building solutions for educational institutions, healthcare providers, Fortune 500 companies, and government agencies throughout the United States. From portable classrooms to modular clinics, modular office buildings to permanent multi-story facilities, no other modular construction company in the Southwest can match our successful track record of building a more diverse range of modular building facilities. As a vertically integrated company, we can offer a comprehensive range of services that includes:

- No-cost project planning
- Full in-house design
- In-plant manufacturing on 20-acre campus
- Complete construction services including site development
- Concurrent multi-site capabilities
- Strong aggregate bonding lines



By providing all these services in a single-source solution, you receive the benefits of accelerated completion time, assurance of value, and a strong professional relationship. Our experience has shown us that the best features we can build into any building are customer satisfaction and value. We believe that the right way is the only way to do a job, and no matter what it takes, we will spare no effort to get it done. Since our inception, every building we've designed, manufactured, and constructed has been an expression of this philosophy.

# PERMANENT MODULAR CONSTRUCTION

For permanent commercial buildings, our Accelerated Building System is the next generation in building design and construction - and it's available exclusively in the Southwest from Ramtech Building Systems. With the Accelerated Building System, an engineered reinforced concrete slab foundation is constructed on the building site while fabrication of the modular building is taking place in Ramtech's manufacturing plant. When complete, the building sections are shipped to the project location, crane-set onto the concrete slab, and quickly weathered-in and finished-out on site. By using this system, we've perfected a commercial construction approach that provides for:

- Reduced design and construction costs
- Shorter completion time for faster revenue generation
- Superior quality over other construction methods
- The availability of standard and custom floor plans



Our Accelerated Building System provides for the quality and longevity you should expect in a permanent building combined with the flexibility for an extremely aggressive construction schedule. And, Ramtech has standard or custom floorplan designs to meet virtually any facility space need.

## Modular Construction



Overall Time Savings of  
25% - 50%

## Site-Built Construction





# TEMPORARY MODULAR CONSTRUCTION



Ramtech's vertically integrated process begins by conducting a comprehensive needs analysis of your commercial construction project. Then we develop a floor plan and building approach designed to give you the facility you want, all within your budget. By drawing on years of commercial construction experience, we've honed a modular construction approach to temporary commercial buildings that yields speed in delivery, the assurance of value, and a strong relationship with our clients. With a modular building from Ramtech, you can have an affordable and flexible solution to your facility space needs today.

At Ramtech, modular buildings have been our core competency since 1982. That's why large and small businesses have relied on Texas-based Ramtech Building Systems to meet their diverse temporary commercial facility needs. Whether it's for a small administrative office or a large manufacturing space, we are uniquely positioned in the commercial construction industry to answer the call with professionals who specialize in every aspect of building design, manufacturing, and construction. Our standard floor plans and custom commercial buildings are provided with:

- Full in-house engineering and design
- Operating and finance lease options
- An inexpensive option to renovations or permanent construction
- The ability to relocate the building should demographics change



# FLOOR PLANS

At Ramtech, we take great pride in helping our clients with their space planning needs, and as part of our service will help develop basic floor plans for you. Among the many standard and custom product designs we provide, the following represent a small sample:

- [Temporary office building feat. eight private offices \(1,925 sf\)](#)
- [Temporary bank building feat. private offices \(2,496 sf\)](#)
- [Permanent office building feat. open office space \(5,040 sf\)](#)
- [Permanent office building feat. group & private offices \(14,608 sf\)](#)
- [Two-story permanent office building feat. open office space, 102 private offices, and multiple conference rooms \(182,280 sf\)](#)

If you don't see what you're looking for here, we invite you to contact Jeff Ward at [jward@ramtechgroup.com](mailto:jward@ramtechgroup.com) to discuss your requirements.



*Temporary office featuring four offices, lobby, restroom, storage, & breakroom (1,316 sf)*

*Upper Floor*



*Lower Floor*

*Two-story permanent office/training facility featuring three training classrooms, 14 private offices, three cubicle office spaces, three conference rooms, two communication rooms, and a SIPRNET room (14,400 sf)*



## Project Size

14,400 sq ft

## Construction

IBC Type V

## Contract Type

Design-build  
Stipulated sum

## Completion

17 months

## Facility Use

Office space and  
training facility

## Description

Multi-story building

Brick and EIFS exterior  
with standing seam  
metal roof



Ramtech provided full design-build services for the development and construction of this two-story Accelerated Building System product. Meeting Leed Silver Certification requirements, the facility incorporates three training rooms, 14 private offices, and three cubicle office areas. The building also features three conference rooms, two communication rooms, and a SIPRNET room. The building was designed to blend with the existing architecture of the base at Fort Bliss.







## Project Size

60,000 sq ft

## Construction

IBC Type II  
Non-combustible

## Contract Type

Design-build  
Stipulated sum

## Completion

180 days

## Facility Use

Office space with future  
manufacturing space

## Description

Steel clear span  
construction

Stucco exterior

Spandrel glass windows

40 miles of equipment  
and communication  
wiring



Part of two fast track permanent modular projects built for Motorola in Scottsdale, AZ, both two-story facilities provided light manufacturing, engineering and office space in less than 180 days. Each building was designed with high-strength flooring to handle forklift traffic along with a 70' clear span interior to minimize column obstructions. Their internal systems specifications required over 40 miles of data/communications wiring and compressed air piping servicing over 3,000 valve outlets.



## Project Size

15,330 sq ft

## Construction

IBC Type II & Type V  
Non-Protected

## Contract Type

Design-build cost plus  
with guaranteed max  
price

## Completion

180 days

## Facility Use

Service Operations  
Center

## Description

19 uniquely finished  
facilities across 9 states



One of 19 facilities across nine states, this 15,330 sq ft service operations center was completed in 180 days. Each facility has been designed to meet owner and local municipality exterior masonry requirements, and extensive multi-acre site development was used in each project to accommodate heavily equipment. This facility provides space for engineering and administrative support services.





## Project Size

20,000 sq ft

## Construction

IBC Type V

## Contract Type

Design-build  
Stipulated sum

## Completion

90 days

## Facility Use

Office space

## Description

One story steel  
construction

Stucco exterior

Open office space with  
conference rooms



Over the course of two years, Ramtech completed 11 projects totaling over 275,000 square feet for Hewlett-Packard Corp. This 20,160 square foot facility serves as an engineering and administrative office facility on their corporate campus in Santa Rosa, California. Ramtech worked on the building layout in cooperation with Hewlett-Packard's designated architectural firm to incorporate open office workspace guidelines. The facility features all steel clear span construction with exteriors that blend with the existing structures.





## Project Size

10,752 sq ft

## Construction

IBC Type V

## Contract Type

Design-build  
Stipulated sum

## Completion

90 days

## Facility Use

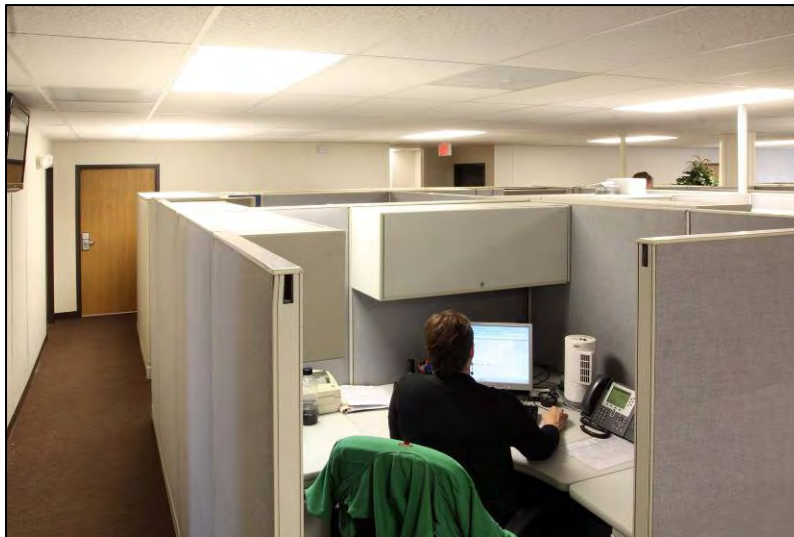
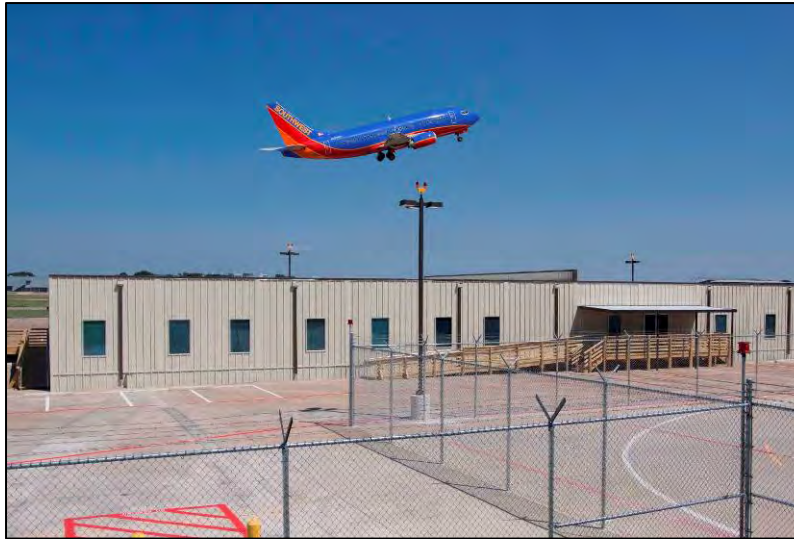
Office space

## Description

Interior walls meet STC  
50 requirements

Parapet exterior walls to  
conceal roofline

45 millimeter white  
TPO roofing



This 10,752 square foot temporary modular project was completed by Ramtech as part of the Love Field Modernization Program. This facility was designed and constructed to house Southwest Airlines executive and administrative personnel from Dallas Aviation during terminal remodeling. With a mixture of hard wall executive offices and a separate open administrative office space, the building contained multiple conference rooms and restrooms.





## Project Size

4,104 sq ft

## Construction

IBC Type V

## Contract Type

Design-build  
Stipulated sum

## Completion

90 days

## Facility Use

Office space

## Description

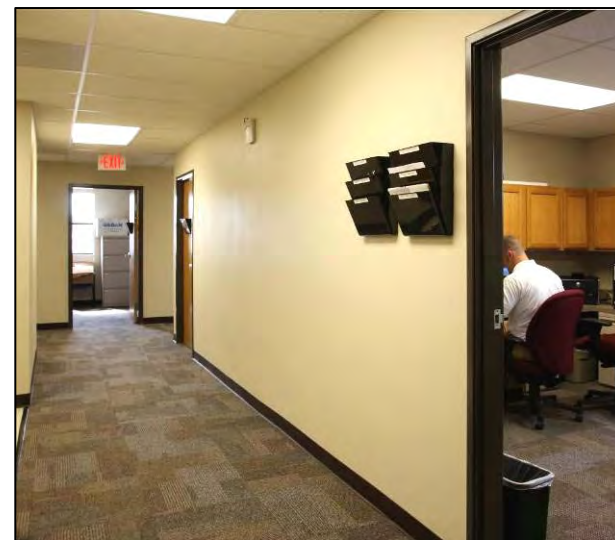
Hardi-panel exterior  
with an Ultracrete  
exterior finish

Four five-ton wall-  
mounted HVAC units

ADA compliant metal  
step and ramp  
assemblies



The city of Arlington, TX needed to reorganize their water department to meet the city's growing demand for services, and they required a quick solution to relocate some of their administrative and engineering personnel from a different location to the district's sprawling main compound. The solution was a six unit, 4,200 square foot modular complex designed for an adjacent equipment yard area. The facility provides for private offices, engineering space, two conference rooms, and a business office with dispatch area.







**1400 U.S. Hwy 287 South**

**Mansfield, TX 76063**

**800-568-9376**

**[jward@ramtechgroup.com](mailto:jward@ramtechgroup.com)**